

## MILANO SMALL 3CM

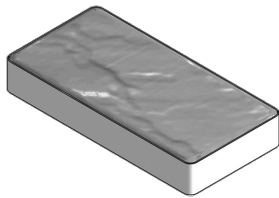
PRODUCT NUMBER # 110141



- Riven stone surfaces and softened edges create the natural look of weathered flagstone
- Versatile 2:1 shape easily forms stacked, runner, basketweave, and herringbone patterns
- Suitable for behind-curb, pedestrian applications, such as patios and sidewalks, with proper pavement design and installation
- Joints and surfaces are designed to create a natural look, minimize furniture wobble, and meet ADA gap and lippage requirements
- Made of durable concrete that won't decay, distort, or attract pests. Iron oxide pigments won't fade with extended UV exposure

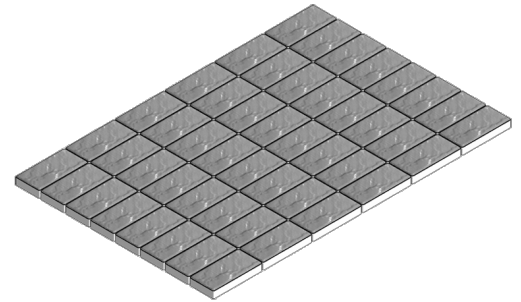
The Panorama series features rectilinear shapes, riven surfaces, and rounded edges which recall the timeless appeal of weathered cut flagstone. Designed for repeating random runner and ashlar patterns, Panorama Demi and Supra combo pavers install quickly - they can even be combined to make a 6-piece pavement - and creates the aesthetic of historical Old World pavements. Panorama paver are available in a range of sizes and heights to suit overlay, vehicular, and large-format applications.

### STONE(S)



				Small
<b>Height</b>	<i>in</i>	In.		1.18
	<i>mm</i>	MM.		30
<b>Length</b>	<i>in</i>	IN.		7.87
	<i>mm</i>	MM		200
<b>Width</b>	<i>in</i>	IN		3.94
	<i>mm</i>	MM		100
<b>Units</b>	<i>/pl</i>	QTY		960

### PALLET LAYOUT



### NOTES

Weights are approximate and do not include shipping pallet. Installation to applicable ICPI standards is required for warranty coverage. Made with natural materials, which vary in color, and Portland cement, which may effloresce - any implied warranty to the contrary is disclaimed.

### PALLET SPECS

<b>Pallet Weight</b>	2728 lbs
<b>Sq Ft/Pallet</b>	207 sq.ft.



[www.pavestone.com](http://www.pavestone.com)

## MILANO MEDIUM 3CM

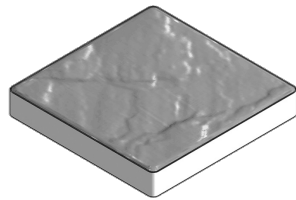
PRODUCT NUMBER # 110142



- Riven stone surfaces and softened edges create the natural look of weathered flagstone
- Square shape easily forms stacked and runner patterns
- Suitable for behind-curb, pedestrian applications, such as patios and sidewalks, with proper pavement design and installation
- Joints and surfaces are designed to create a natural look, minimize furniture wobble, and meet ADA gap and lippage requirements
- Made of durable concrete that won't decay, distort, or attract pests. Iron oxide pigments won't fade with extended UV exposure

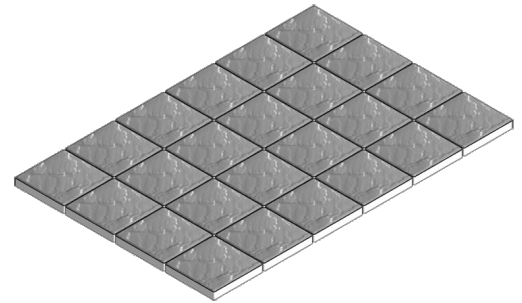
The Panorama series features rectilinear shapes, riven surfaces, and rounded edges which recall the timeless appeal of weathered cut flagstone. Designed for repeating random runner and ashlar patterns, Panorama Demi and Supra combo pavers install quickly - they can even be combined to make a 6-piece pavement - and creates the aesthetic of historical Old World pavements. Panorama paver are available in a range of sizes and heights to suit overlay, vehicular, and large-format applications.

### STONE(S)



				Medium
<b>Height</b>	<i>in</i>	In.		1.18
	<i>mm</i>	MM.		30
<b>Length</b>	<i>in</i>	IN.		7.87
	<i>mm</i>	MM		200
<b>Width</b>	<i>in</i>	IN		7.87
	<i>mm</i>	MM		200
<b>Units</b>	<i>/pl</i>	QTY		480

### PALLET LAYOUT



### NOTES

Weights are approximate and do not include shipping pallet. Installation to applicable ICPI standards is required for warranty coverage. Made with natural materials, which vary in color, and Portland cement, which may effloresce - any implied warranty to the contrary is disclaimed.

### PALLET SPECS

<b>Pallet Weight</b>	2756 lbs
<b>Sq Ft/Pallet</b>	207 sq.ft.

**PAVESTONE**  
Creating Beautiful Landscapes®

Distributed by:

**ASIP**  
**ENTERPRISES**

www.aspent.com (800) 869-9600

www.pavestone.com



## MILANO LARGE 3CM

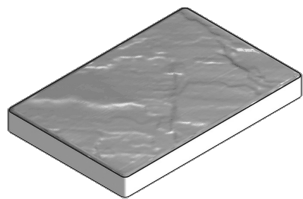
PRODUCT NUMBER # 110143



- Riven stone surfaces and softened edges create the natural look of weathered flagstone
- Versatile 3:2 shape easily forms stacked, runner, and herringbone patterns
- Suitable for behind-curb, pedestrian applications, such as patios and sidewalks, with proper pavement design and installation
- Joints and surfaces are designed to create a natural look, minimize furniture wobble, and meet ADA gap and lippage requirements
- Made of durable concrete that won't decay, distort, or attract pests. Iron oxide pigments won't fade with extended UV exposure

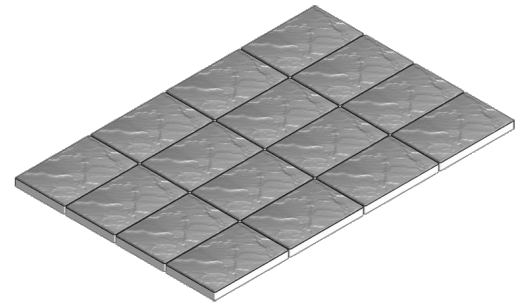
The Panorama series features rectilinear shapes, riven surfaces, and rounded edges which recall the timeless appeal of weathered cut flagstone. Designed for repeating random runner and ashlar patterns, Panorama Demi and Supra combo pavers install quickly - they can even be combined to make a 6-piece pavement - and creates the aesthetic of historical Old World pavements. Panorama paver are available in a range of sizes and heights to suit overlay, vehicular, and large-format applications.

### STONE(S)



				Large
<b>Height</b>	<i>in</i>	in.		1.18
	<i>mm</i>	MM.		30
<b>Length</b>	<i>in</i>	IN.		11.81
	<i>mm</i>	MM		300
<b>Width</b>	<i>in</i>	IN		7.87
	<i>mm</i>	MM		200
<b>Units</b>	<i>/pl</i>	QTY		320

### PALLET LAYOUT



### NOTES

Weights are approximate and do not include shipping pallet. Installation to applicable ICPI standards is required for warranty coverage. Made with natural materials, which vary in color, and Portland cement, which may effloresce - any implied warranty to the contrary is disclaimed.

### PALLET SPECS

<b>Pallet Weight</b>	2765 lbs
<b>Sq Ft/Pallet</b>	207 sq.ft.



Distributed by:



www.aspent.com

(800) 869-9600

www.pavestone.com